

Early College High Schools



El Paso
Community
College

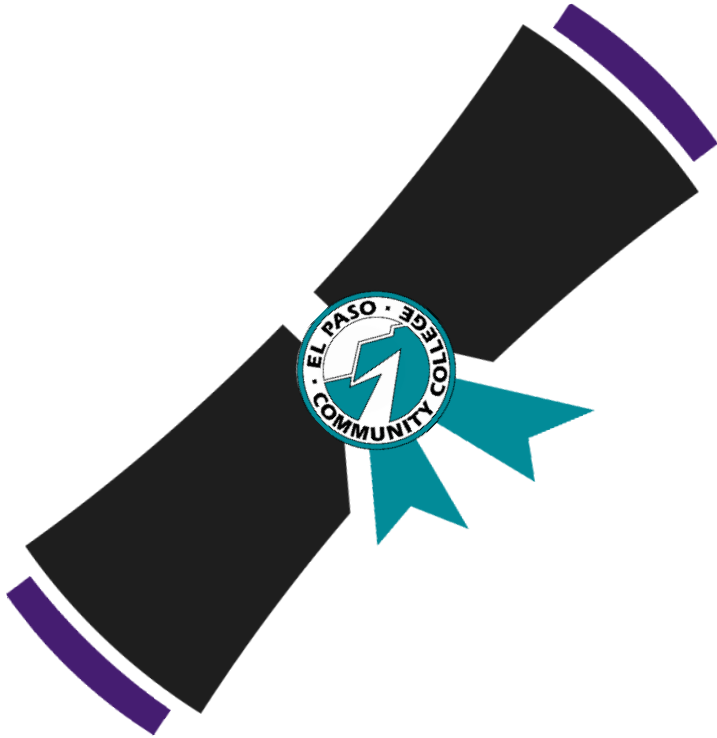
The Best Place to Start *and Finish!*

Presentation to the
Board of Trustees
Spring 2021

Tonie Badillo
Dean

Dual Credit and Early College High Schools

ECHS Initiative @ EPCC since 2005



- Students **underrepresented in higher education** have the opportunity to earn an associate degree and a high school diploma in 4 years.
- Schools apply for designation to the Texas Education Agency (TEA) every year and must comply with the **TEA Blueprint**.
- We have **three ECHS models**: on a college campus, standalone, and school-within-a-school.
- Starting in 2019, we have a new early college high school model: **Pathways in Technology Early College High School or P-TECH**.
- **72%** of the students earn an associate degree before they graduate from high school.
- Currently **20 schools**

ECHS Designation and Blueprint

The Early College High School (ECHS) Blueprint provides foundational principles and standards for innovative partnerships with colleges and universities.



Design Elements

All Early College High Schools are required to meet all the design elements for each benchmark annually.



Outcomes Based Measures (OBMs)

All Early College High Schools are required to meet Outcomes-Based Measures (OBMs) on data indicators related to access, attainment, and achievement.

Early College High School Designation

OBMs will phase in for opening Provisional ECHSs as the entering cohort of 9th graders advance through graduation. Upon the completion of the Provisional period, a campus must meet the state's Designated OBM criteria. OBMs will be phased in for all ECHSs through 2021-22. OBM will be used to determine campus designation status for 2022-23, and thereafter.

Fidelity of Implementation

TEA provides technical assistance to promote implementation of the ECHS model with fidelity. Campuses that meet the Distinguished OBM criteria for any of the three OBM categories of access, attainment, and achievement will receive Distinctions status.

Provisional Early College High School

Provisional Early Colleges are new ECHSs that demonstrate they can implement all design elements for each benchmark and meet the Provisional Early College OBMs. For public purposes, campuses are identified as Early College.

Early College High School

Early College designees maintain designation by demonstrating they can implement each of the design elements for each benchmark and meet the Early College OBMs.



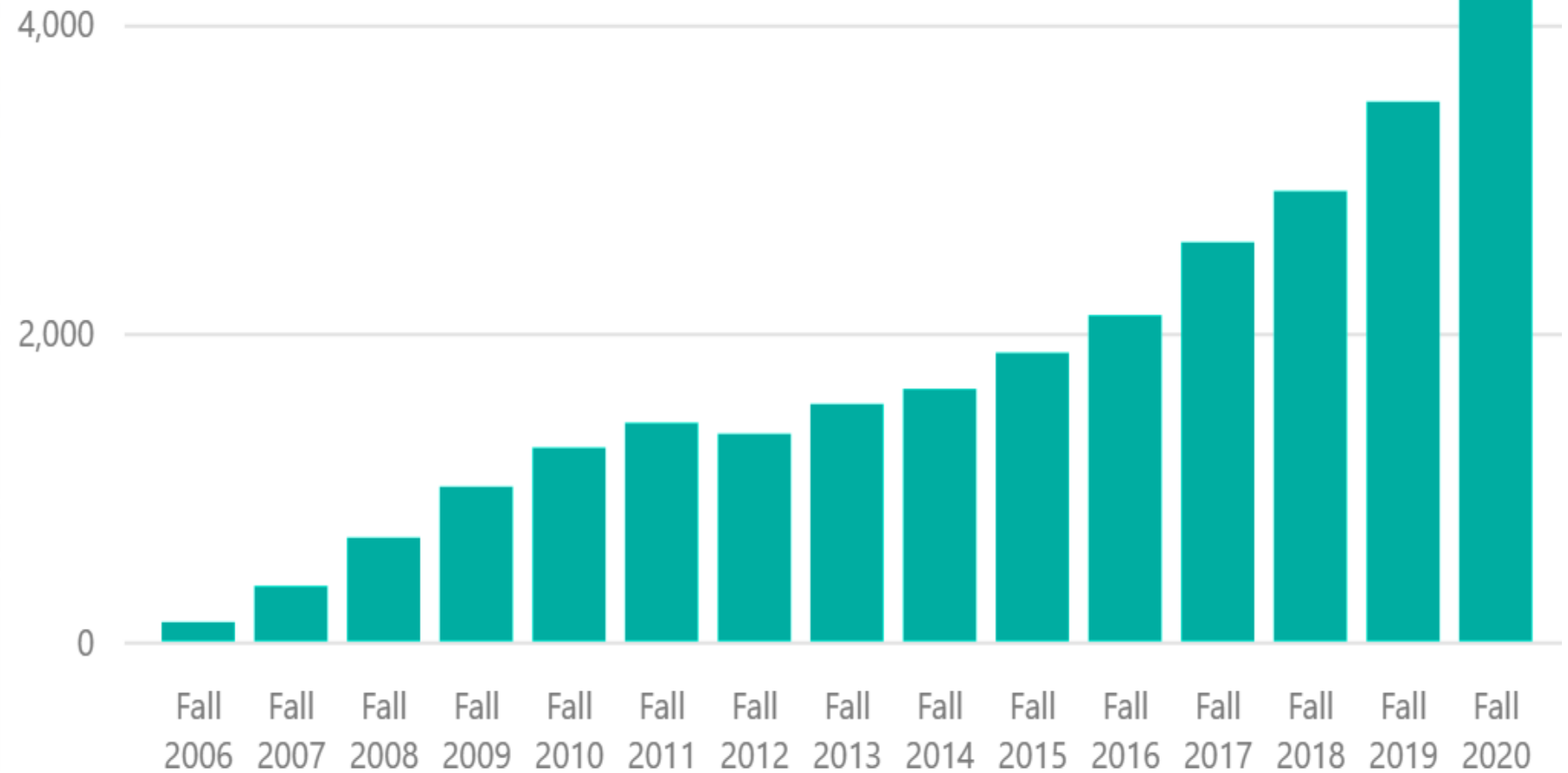
Outcomes Based Measures (OBMs): *Distinctions*

Campuses may receive individual Distinctions in Access, Attainment, and Achievement for exemplar service to ECHS students.

- Created in 2008 to support early college high schools in the region and address common concerns
- Includes EPCC, ISD and high school administrators, TEA and UTEP representatives
- Meets twice a year

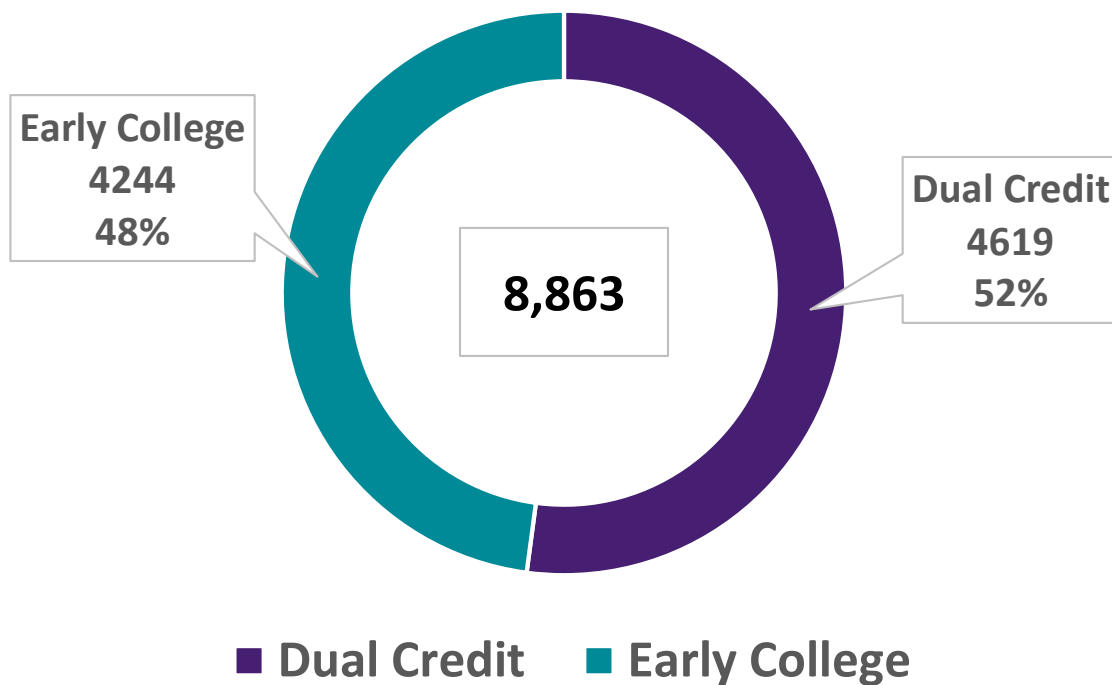


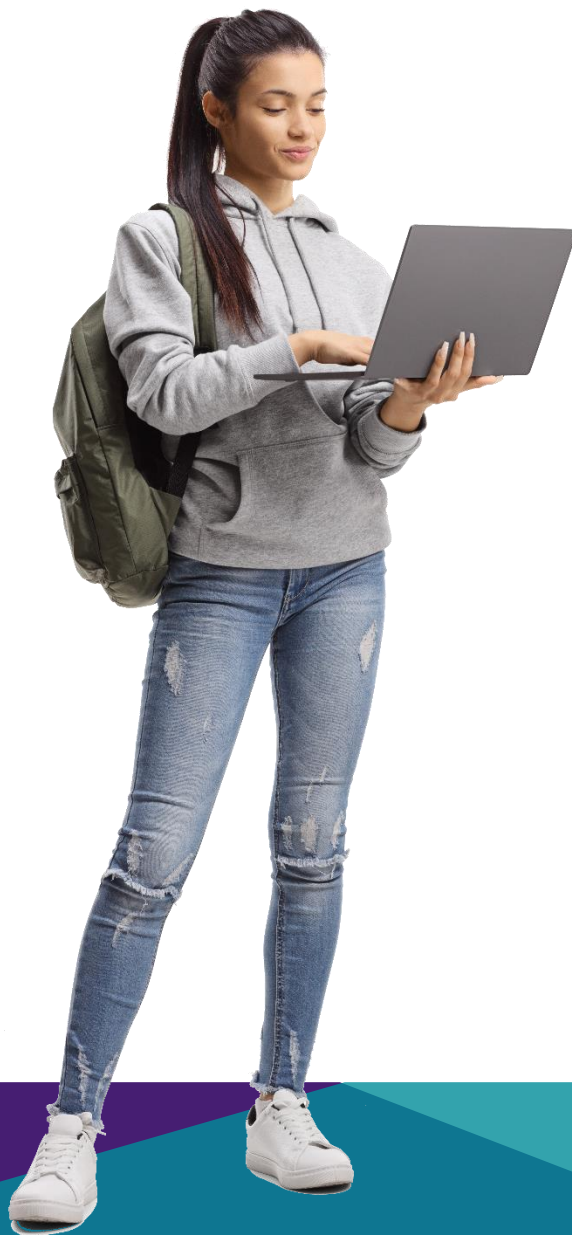
ECHS Enrollment



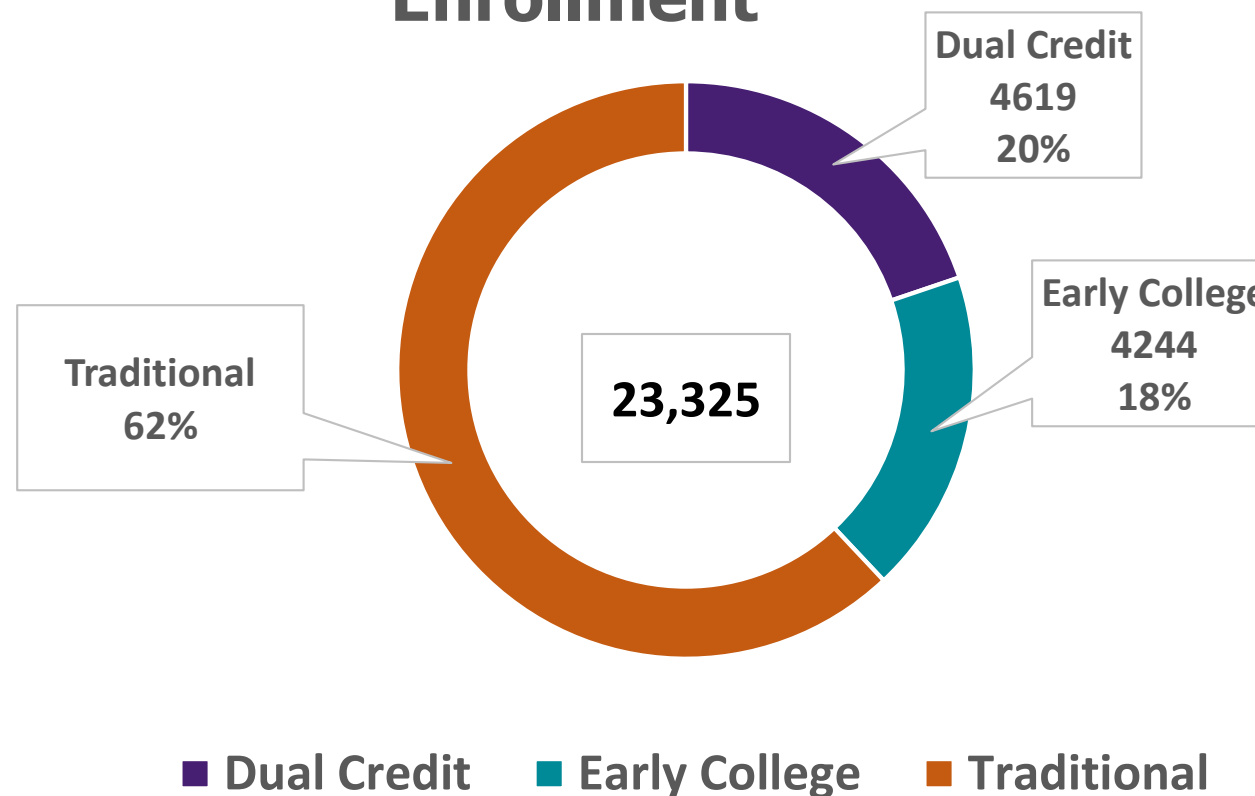
High School Enrollment

DC/ECHS Enrollment
Spring 2021



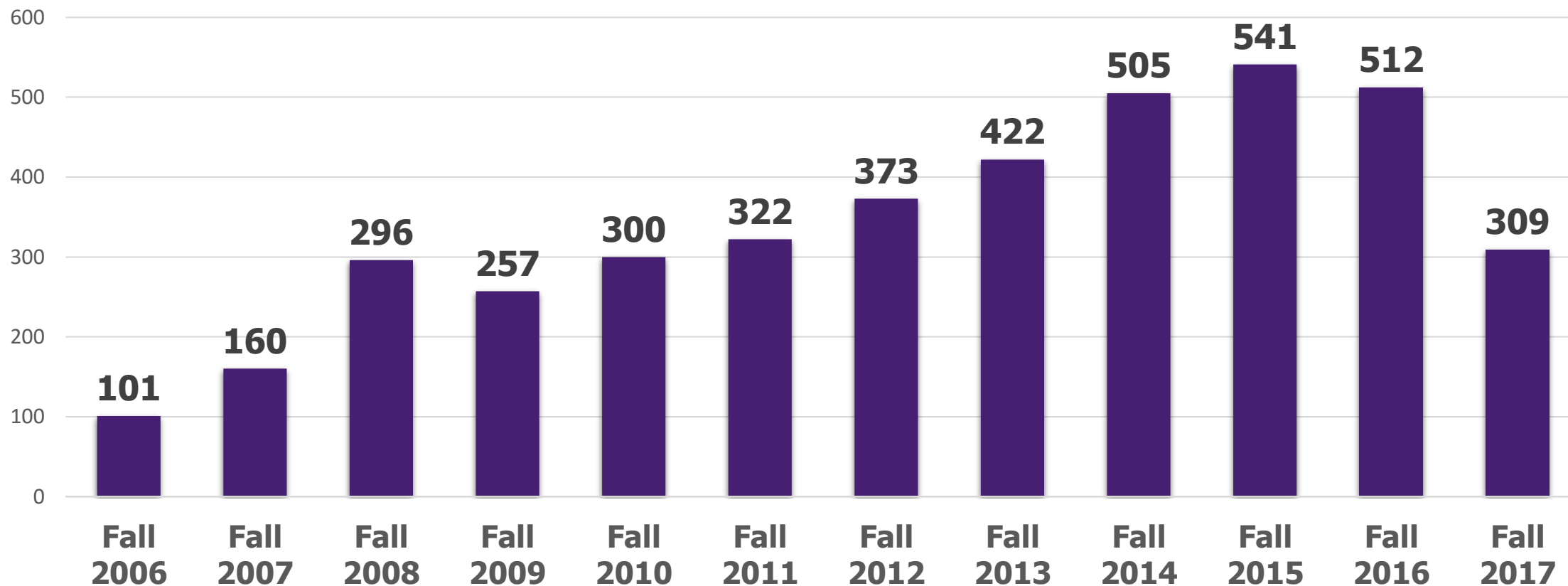


Enrollment



ECHS Graduation

Total Graduated within 4 Years of Cohort Term



4,098 Graduates To-Date!

ECHS Partnerships 2006-2020

Canutillo ISD 2008		Clint ISD 2012		Clint ISD 2019		EPISD 2008		EPISD 2014	
Fabens ISD 2010		Fabens ISD 2020		SISD 2006		SISD 2015		SISD 2016	
SISD 2017		SISD 2019		SISD 2019		SISD 2019		Tornillo ISD 2020	
YISD 2007		YISD 2017		YISD 2017		YISD 2019		YISD 2020	

Opening Fall 2021



**Horizon HS
P-TECH
Cyber-
Security
Academy**



**Mt. View
HS Health
Professions
Academy
P-TECH**



**Coronado
HS P-TECH
(Business)**



**El Paso HS
P-TECH
(Computer
Science)**



**Franklin HS
P-TECH
(Health)**



**Jefferson
HS P-TECH
(Health)**



**San Elizario
Early
College
High School**

Opening Fall 2022



**Harmony
Science
Academy
ECHS**



**Andress HS
P-TECH
(Teaching)**



**Austin HS
P-TECH
(CS-IT)**



**Bowie HS
P-TECH
(Teaching)**



**Chapin HS
P-TECH
(CS-IT)**



**Irvin HS
P-TECH
(Health)**



**Synergi
P-TECH
(ENGR-
BIOL-CS)**



THANK YOU!

Questions?

❖ Instruction

- Deans, Faculty, Staff
- Counselors
- Librarians
- Student Success
- DLSS

❖ Student Services

- Enrollment and Registration
Administration and Staff

www.epcc.edu/academics/dualcredit